

FELLOWES, INC

MediaFACE 4.0

MediaFACE 4.0 User's Guide

Fellowes, Inc
1789 Norwood Ave
Itasca, IL
630-893-1600

Neato, Inc
250 Dodge Ave
East Haven, CT 06512
800-984-9800

Copyright

2003 Fellowes, Inc. All rights reserved. No part of this publication may be reproduced, stored in a retrieval system, or transmitted in any form or by any means, electronic, mechanical, photocopying, recording or otherwise, without the prior written consent of Fellowes, Inc. 1789 Norwood Ave, Itasca, IL.

Trademarks

NEATO[®], the NEATO[®] logo, and the MediaFACE[®] logo are trademarks of Fellowes, Inc, which may be registered in some jurisdictions. Windows 95, 98, ME, 2000, XP are registered trademarks of Microsoft Corporation in the U.S. and other countries used under license.

* All other trademarks are owned by their respective owners.

Changes

The material in this document is for information only and is subject to change without notice. While reasonable efforts have been made in the preparation of this document to assure its accuracy, Fellowes, Inc assumes no liability resulting from errors or omissions in this document or from the use of the information contained herein.

Fellowes, Inc reserves the right to make changes in the product design without reservation and without notification to its users.

Date Last Updated : 3/3/2003

CHAPTER 1 : INTRODUCTION 5

APPROACH..... 5
COMMON TERMINOLOGY..... 5
SYSTEM REQUIREMENTS..... 6
PAPER..... 6

CHAPTER 2 : INSTALLATION 8

START THE INSTALLATION..... 8
WELCOME SCREEN 9
LICENSE AGREEMENT 10
USER INFORMATION 11
CHOOSE DESTINATION 12
TYPE OF SETUP..... 13
SELECT PAPER TYPE 14
LOCATION IN START MENU..... 15
REGISTRATION 16
MEDIAFACE 4.0 IMAGE LIBRARY SELECTION 17
INSTALLATION COMPLETE..... 18

CHAPTER 3 – STARTING THE APPLICATION 19

OPENING MEDIAFACE 4.0..... 19
WHAT DO I DO NEXT? - SELECT A LABEL TEMPLATE..... 19
LABEL TEMPLATES 20
PROJECT TEMPLATES..... 20
THEMES 20

CHAPTER 4 - FAMILIARIZE YOURSELF WITH THE MEDIAFACE 4.0 WORKSPACE 21

MENU BAR..... 22
FILE..... 22
EDIT 22
VIEW 22
INSERT 23
FORMAT 23
PROJECT..... 24
TOOLS 24
WINDOW 24
HELP 24

CHAPTER 5 - CREATING A LABEL 25

SELECT TEMPLATE 25
INSERT AN IMAGE ONTO THE LABEL 26
BASIC MANIPULATION 28
Rotate Image 29
Flip Horizontal 30

Flip Vertical..... 31
 Fit To Label..... 32
INSERT TEXT ONTO A LABEL..... 33
PRINTER CALIBRATION 36
 CALIBRATION WIZARD..... 36
 PLAIN PAPER CALIBRATION METHOD OVERVIEW 36
 MEDIAFACE 4.0 PRINTER CALIBRATION SHEET OVERVIEW 38
PRINTING MY LABEL..... 40
SAVING MY DESIGN 40

CHAPTER 6 - FINGERPRINTING : IDENTIFYING SONG NAMES FOR YOUR DESIGN 41

OVERVIEW..... 41
SELECTING LABEL 41
START THE LIST MANAGER..... 42
CREATE A PLAYLIST 43
NAMING YOUR PLAYLIST 45
INSERTING A PLAYLIST..... 46

TECHNICAL SUPPORT 49

SOFTWARE REGISTRATION 49

LABEL AND INSERT REFILLS..... 49

Chapter 1 : Introduction

Thank you for choosing MediaFACE 4.0 as your labeling software. MediaFACE 4.0 is the fastest, easiest , and most feature rich software available for Windows. MediaFACE 4 gives you the following capabilities:

- Create labels, inserts and sleeves for CD/DVD, MiniCD, Video, MiniDisc and More
- Digital Recognition of MP3 and Other Music Files – no more typing in track names!
- 500 High Resolution Background Images in a variety of categories
- Wizard Mode – Design and Print a Label in under 30 seconds!
- Expert High-End Graphics Tools
- Direct import of images from scanner, webcam, digital video/still camera

Approach

The manual will take you through some of the fundamentals of using the MediaFACE 4.0 Advanced program, by using a CD/DVD Label as the label to design. The concept for designing, like adding text and images, is the same no matter what label template you pick.

Common Terminology

This section will list common terms or phrases that will be used throughout the manual. Our goal is to provide you a list of terms along with a definition for each one.

Label

A Label is the design area on a sheet of paper. A sheet of paper can contain more than one label. For example, the CD/DVD 2-UP paper has 2 CD/DVD Labels and 2 utility labels. When designing with MediaFACE 4, you design on the label first, then pick your paper when you want to print.

Paper

Paper is really a sheet of our Fellowes/Neato or Neato branded paper. MediaFACE 4.0 supports many different paper layouts for your labeling needs.

Label Template

A Label Template in MediaFACE 4 is where you start when you want to design your label. A template is essentially a copy of a blank label to which you can add text and pictures. For example, if you were designing a cd label, you would choose the CD Label Template. MediaFACE 4 would then show a blank copy of the cd label on the screen.

Project Template

A Project Template in MediaFACE 4 contains all of the labels on a specific sheet of paper. For example, if you were using our new CD Labels with Spine and Core Labels paper, the project consists of a blank cd label, a blank spine label, and a blank core label.

System Requirements

Minimum System Requirements - **PC Compatible 200MHz or faster processor** (600MHz recommended), **Windows XP Professional, XP Home, 2000 (SP2 and Higher), 98, 98SE, Millenium, NT 4.0 (SP6 and Higher)**, **128MB RAM** (256MB RAM recommended), **240MB free disk space**, **CD-ROM Drive**, **SVGA Display - 16-bit color recommended**. **Software must run in 800x600 screen resolution.**

Optional - **Internet access to take advantage of some special features. Scanner, digital still/video camera or webcam.**

Paper

This section is a list of all Fellowes/NEATO and NEATO paper which the software supports. The paper comes in both US and A4 Letter size unless noted.

Anylabel (US Letter size only)

Audio Cassette J Cards

Audio Cassette Labels

CD Labels (2up)

CD Labels Full Coverage

CD Labels (3up) (US Letter size only)

CD Plus Labels (CD, spine and core)

CD Print & File Pouches (adhesive)

CD Print & File Pouches (non-adhesive)

Core Labels

DAT Labels and J Cards

DVD Inserts

Floppy Disk Labels

HandiCD/Business Card CD Labels

Jaz Labels

Jaz Inserts

Jewel Case Booklets

Jewel Case Tray Liners

SlimLine Jewel Case Inserts

MiniCD Labels

MiniDisk Labels

Magneto Optical Labels

Magneto Optical J Cards

HandiCD/Business Card Print & File Pouches

SuperDisk Labels

SuperDisk Inserts

VCR Inserts

VCR Face and Spine Labels

VCR Sleeves

VCR Face Labels

VCR Spine Labels

Zip Labels

Zip J Cards

Chapter 2 : Installation

This chapter will guide you through the installation of MediaFACE 4. The MediaFACE 4 software comes in two modes: Full and Trial. Full mode is activated with a serial number that can be located on the back of the cd sleeve or on the cd booklet. The serial number will have the format: xxxxx-xxxxxx-xxxx-xxxx. The Trial version is a Try and Buy version of MediaFACE 4, which will expire after 30 days. The Trial version has all the features of the full version, with the exception that fingerprinting of audio cds is limited to 100 successful identifications of songs, and the image library of 500 images in the full version is restricted to 25.

Note: It is advised that you close all open applications before beginning with the installation, **including all anti-virus applications.**

Start the Installation

Place the MediaFACE 4.0 CD into your cd-rom drive. You should see the main install screen (pictured below).

Note: If the window below does not appear, click on “Start”, then “Run” and type in the following line:

- D:\setup.exe (where ‘D’ is the drive letter of your cd-rom drive. Then click “OK”.



Figure 1 – These are the languages that can be selected for MediaFACE 4.0

The main install window is separated into 3 steps.

1. Choose your language by left clicking. The language of the install will also change on the screen depending on the language you selected. You can choose English, French, Italian, German, Spanish, Polish and Korean.
2. Choose whether you want to install the full application or the trial mode. If you select the full version, you have the option of install the 500 high resolution images. These images are separated into several categories.
3. Click install to begin the installation process.

Welcome Screen

You will now be presented the opening welcome screen. Please click Next to Proceed.

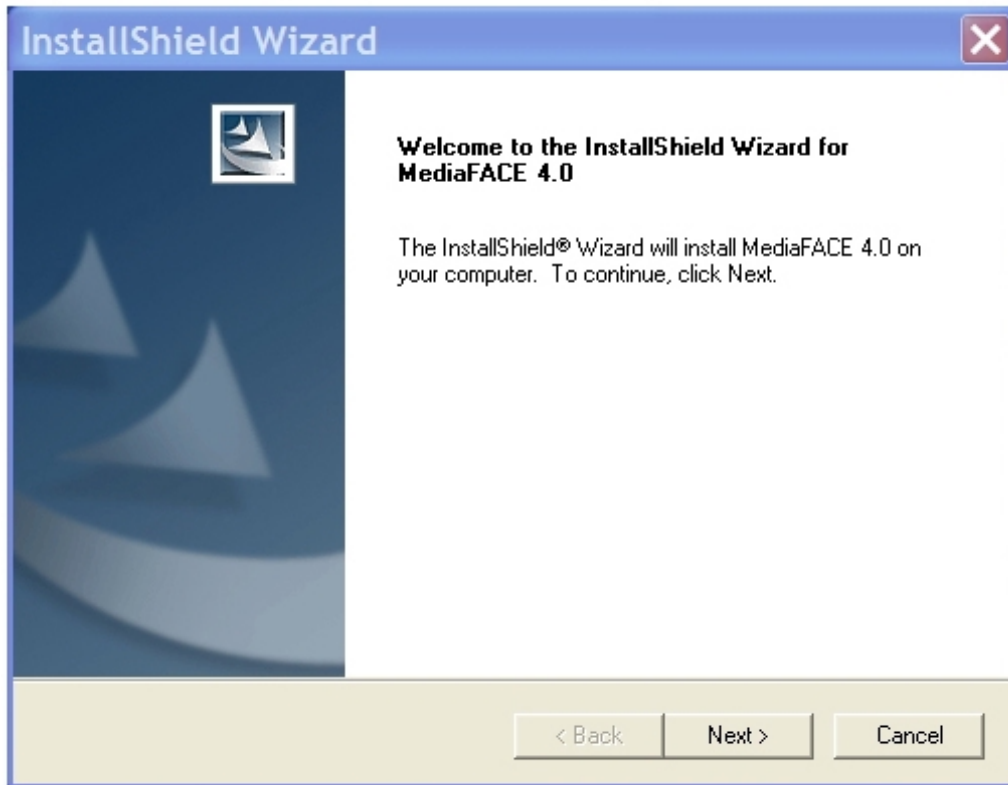


Figure 2 – Welcome screen – Just click Next!

License Agreement

You will now be presented with the MediaFACE 4 License Agreement. Please read the agreement carefully.

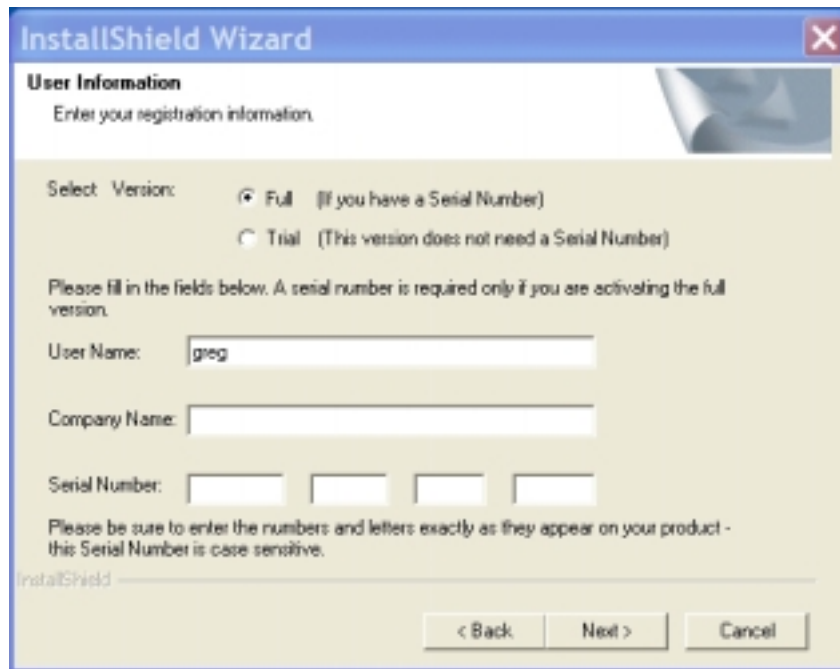


Figure 3 – Please read the license agreement before proceeding with the installation.

To continue with the installation, you must accept the terms of the license agreement. Click 'Yes' to proceed to the next step. Clicking 'No' will end the installation process.

User Information

You will now be presented with the User Information Screen. Please fill in the appropriate information. You will need to choose either the Full or Trial Version of this software. The full version requires a serial number, which will be located on the outside of the cd sleeve or booklet. Please be sure to store the serial number in a safe place.



The screenshot shows a window titled "InstallShield Wizard" with a close button in the top right corner. The main heading is "User Information" with a sub-heading "Enter your registration information." Below this, there are two radio button options for "Select Version": "Full (If you have a Serial Number)" which is selected, and "Trial (This version does not need a Serial Number)". A note states: "Please fill in the fields below. A serial number is required only if you are activating the full version." There are three input fields: "User Name:" containing "greg", "Company Name:" which is empty, and "Serial Number:" which is divided into four empty boxes. A note below the serial number fields says: "Please be sure to enter the numbers and letters exactly as they appear on your product - this Serial Number is case sensitive." At the bottom, there are three buttons: "< Back", "Next >", and "Cancel". The "InstallShield" logo is visible in the bottom left corner of the window.

Figure 4 – Depicts the User Information page - please select the version of the software you wish to install.

The trial version does not require a serial number and will only work for 30 days. Click 'Next' to proceed with the installation.

Choose Destination

The next step is to determine where you install the software on your computer.

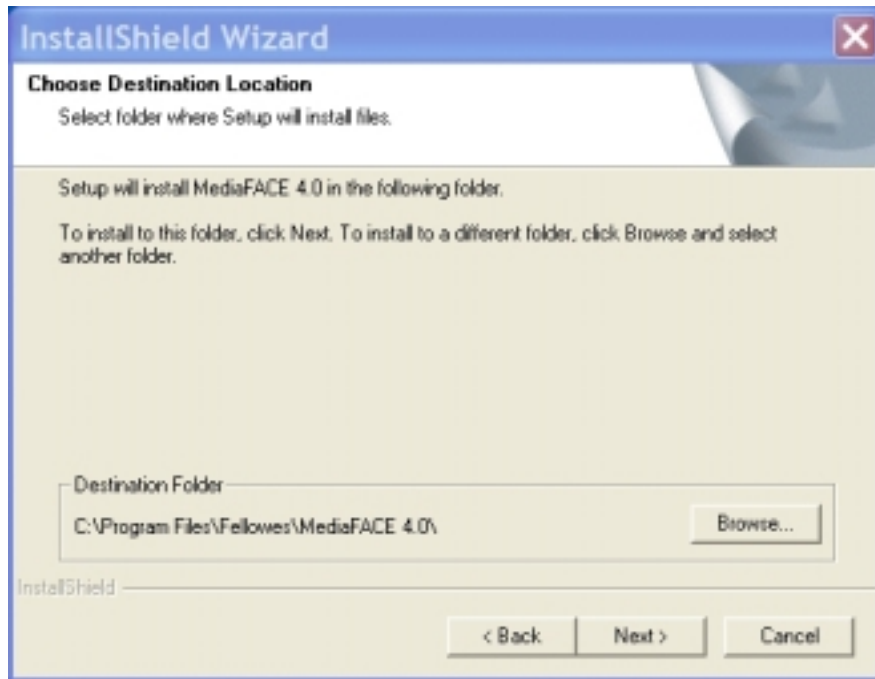


Figure 5 – It is strongly recommended you choose the default location. Click 'Next' to proceed.

Type of Setup

The Select Type of installation screen allows you to install the entire application, or perform a custom installation (where you can install a subset of all the features).

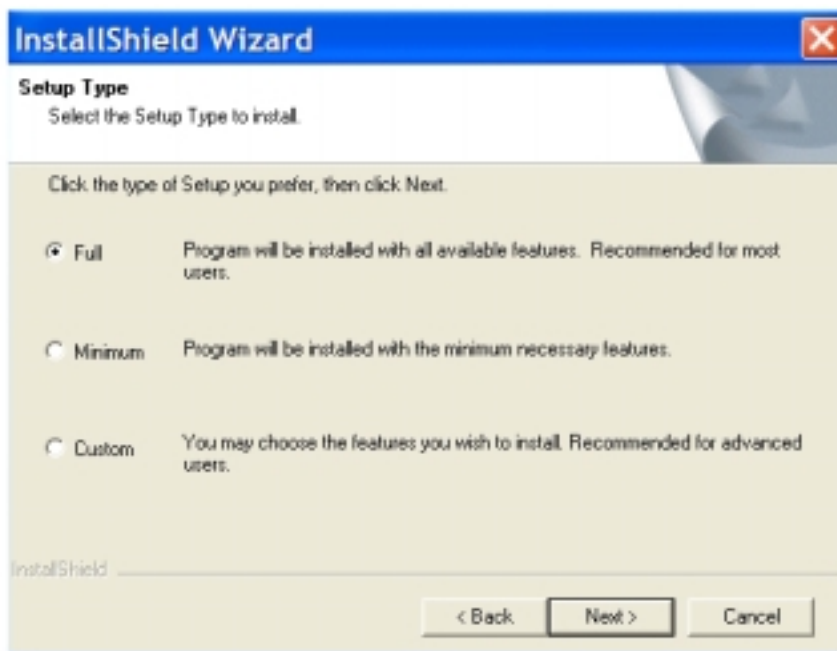


Figure 6 – Setup Type screen. Select Full to install all of the features of MediaFACE 4.0

It is strongly recommended you choose the option 'Full'. Click 'Next' to proceed.

Select Paper Type

MediaFACE 4.0 supports both US and A4 paper types. You can install the templates (or paper layouts) for either US (Letter Size) paper, A4 paper or both. You also need to make a choice as to your default paper type. This choice will be used in the final stage of designing a label – when you go to print. You will be presented with a choice of different paper layouts to use for printing.

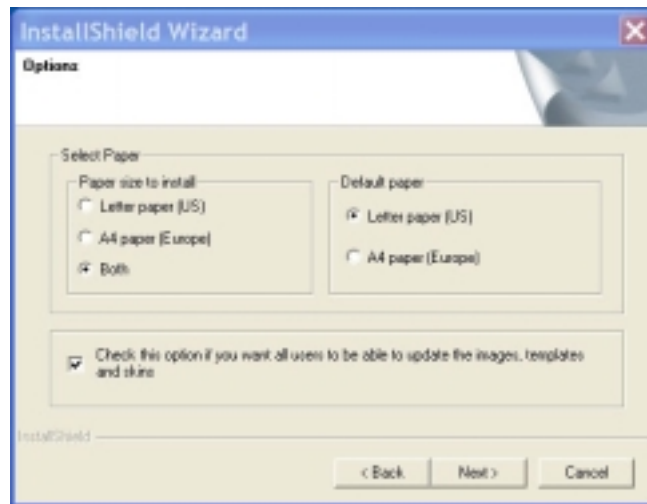


Figure 7 – Choose which paper formats to install, and which one will be the default choice.

Click 'Next' to Proceed to the next step.

Location in Start Menu

This screen allows you to place the MediaFACE 4.0 folder within your start menu. The default is to create the MediaFACE 4.0 folder within Start -> Program Files -> MediaFACE 4.0. You can place the folder anywhere within the start menu, but it is strongly recommended to use the default location.

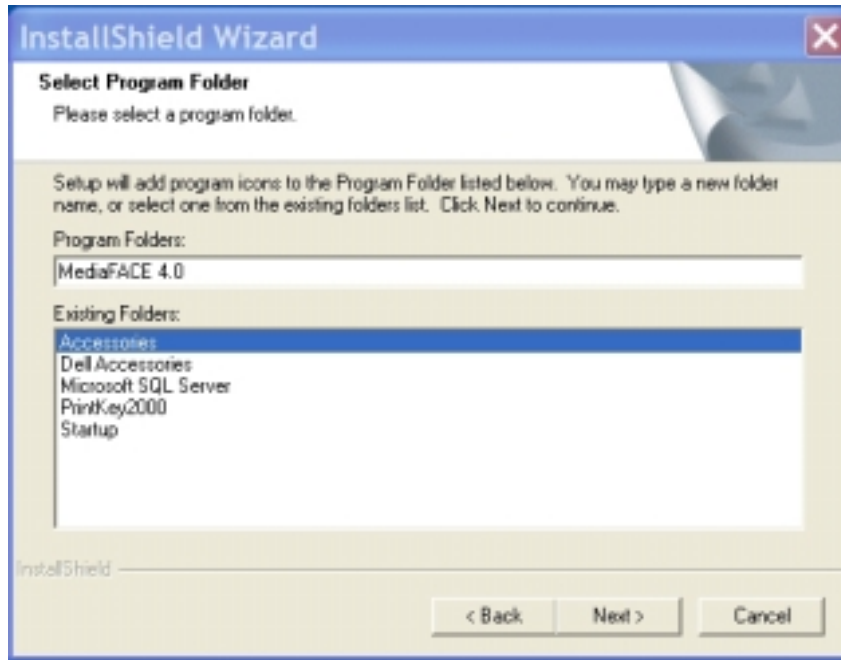


Figure 8 – Select Program Folder installation screen

The MediaFACE 4.0 program folder will contain links to

1. MediaFACE 4.0 Advanced program
2. MediaFACE 4.0 Design Wizard
3. MediaFACE 4.0 Calibration Wizard
4. MediaFACE 4.0 Help
5. Shortcut to Image Library

You can also specify the name of the program folder, but we highly recommend you leave it as the default of MediaFACE 4.0.

The installation will now begin. Please be patient as it may take several minutes to install.

Registration

Near the end of the installation, a window will pop up asking that you register the software.

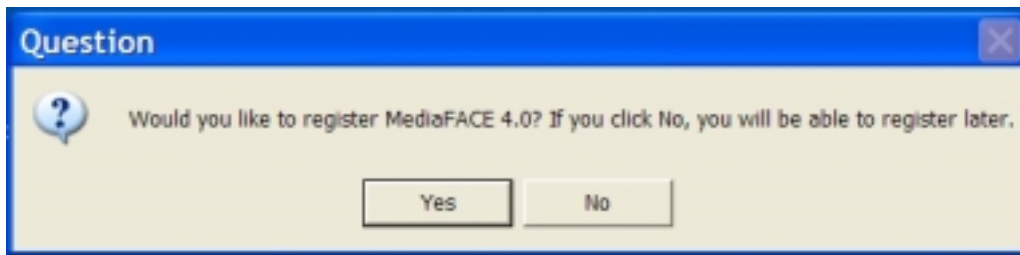


Figure 9 – Registration Question

We strongly encourage you to register the software with us. This will allow us to notify you of any updates to the software, new paper templates, or special offers.

MediaFACE 4.0 Image Library Selection

MediaFACE 4.0 Full version comes with 500 high resolution images. The image library is organized by the following categories:

1. General
2. Business
3. Music
4. Spiritual
5. Lifestyle
6. Special Occasion

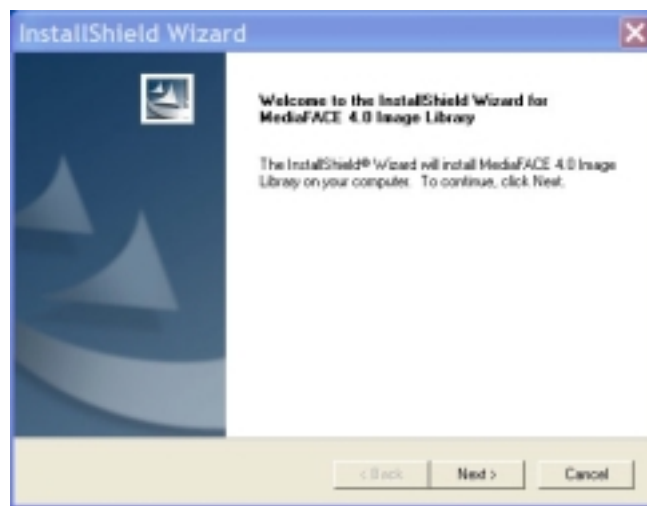


Figure 10 – Starting the installation of the MediaFACE 4.0 Image Library

If you selected the Full version (and not the Trial version), the image categories you selected will now be installed.

Please be patient as the installation will take several minutes, and several windows will appear during the installation.

Installation Complete

The installation of MediaFACE 4.0 is now complete. You are ready to design labels!

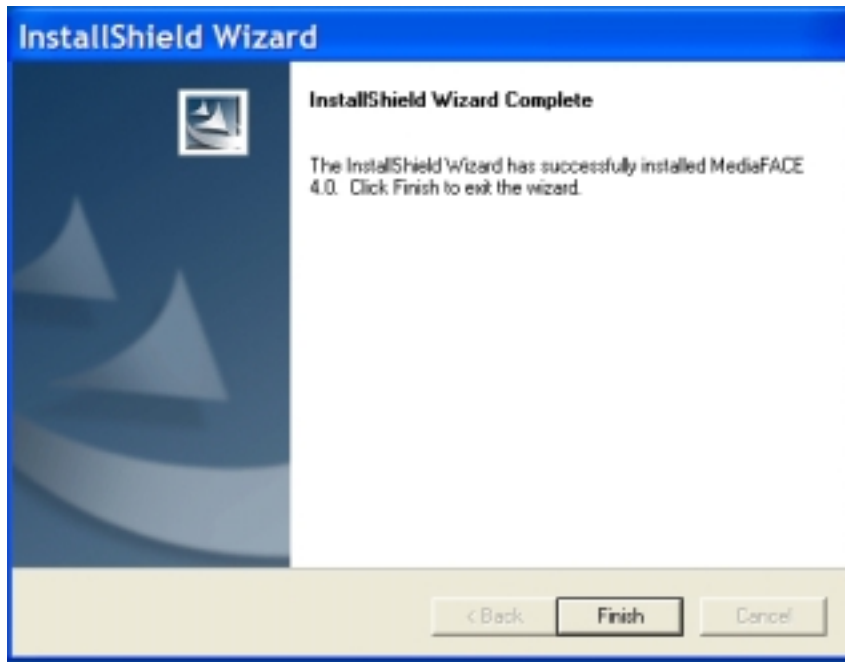


Figure 11 – Installation Complete

Chapter 3 – Starting the Application

Opening MediaFACE 4.0

Locate the MediaFACE 4.0 program by clicking on Start / Programs / MediaFACE 4.0. The MediaFACE 4.0 program folder will contain links to

1. MediaFACE 4.0 (*this is the advanced mode*)
2. MediaFACE 4.0 Design Wizard
3. MediaFACE 4.0 Calibration Wizard
4. MediaFACE 4.0 Help
5. Image Library (*shortcut to MediaFACE 4.0 Image Library*)

Click on “MediaFACE 4.0 Advanced Program” to start the application.

What do I do next? - Select a label template

You will now see the New Project Wizard window open. The window will look like the following:

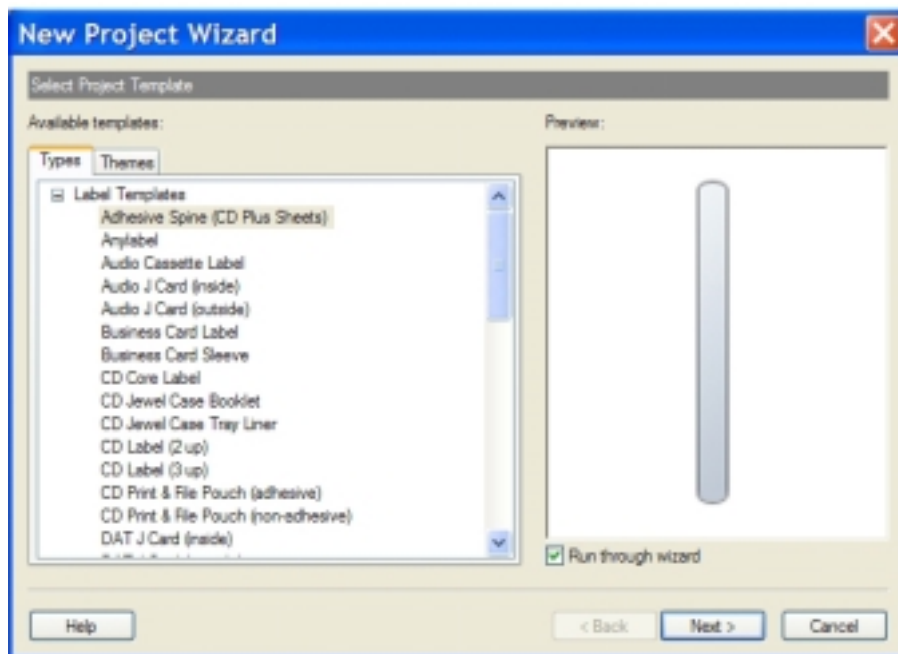


Figure 12 – New Project Wizard

There are 2 tabs on the left part of the screen. They are:

1. Types
 - a. Labels Templates
 - b. Project Templates
2. Themes
 - a. Birthday
 - b. Business
 - c. Holiday
 - d. Lifestyle
 - e. Music
 - f. Wedding

Label Templates

Label templates are a list of labels that you can design and print. A project can contain multiple labels. So you could have a cd/dvd label, a core label and a trayliner label all within the same project. Selecting a Label Template will open a new project with just that one blank label. But don't worry! You will be able to add additional labels to this project, or create new versions of the same label.

Project Templates

Project templates are pre-made projects that consist of multiple labels. For example, if you were using our new CD 2-UP with core and spine labels, you would select the CDPlus Labels (Basic). The new project will now contain a cd label, a core label and a spine label.

Themes

Themes are similar to project templates, however they have a pre-made design, based on the theme selected, included within the project. The new project would contain a background image, text placeholders for you to modify for your needs.

Chapter 4 - Familiarize yourself with the MediaFACE 4.0 workspace

You should now see a window similar to the following:

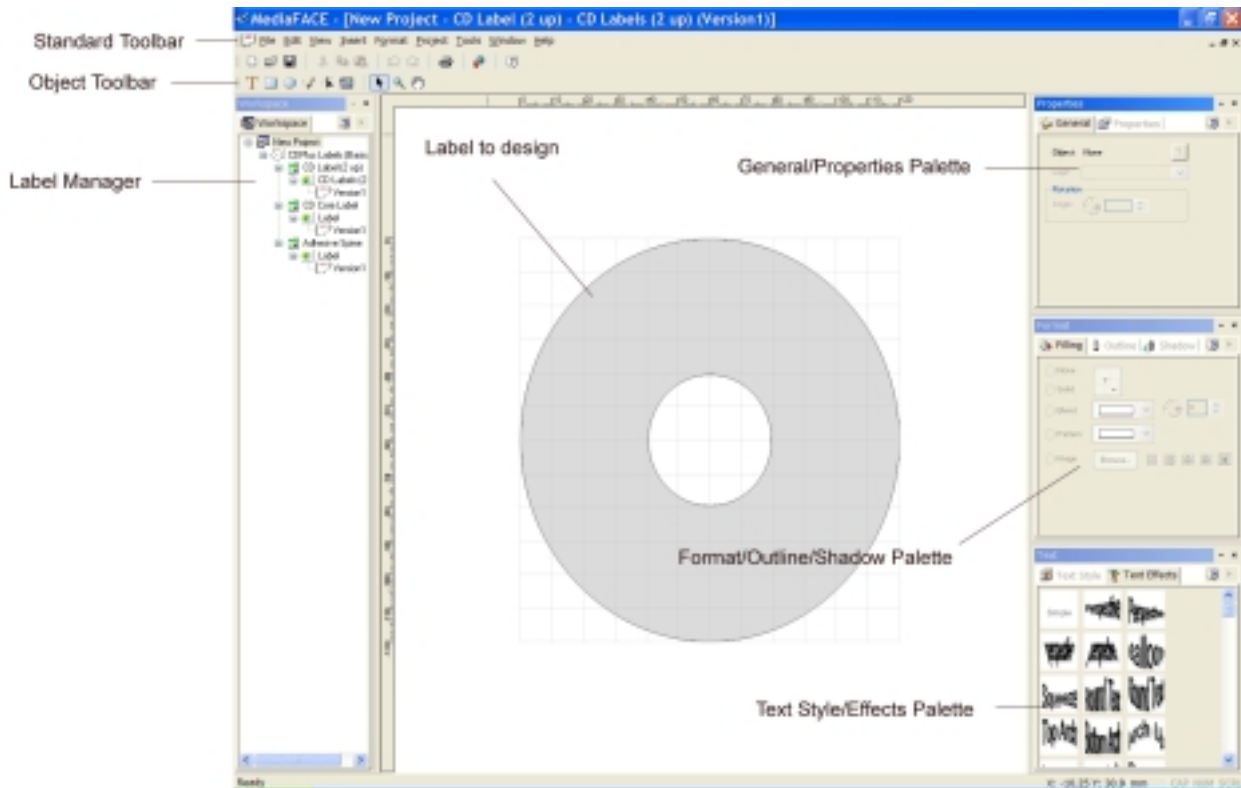


Figure 13 - NOTE: Some items will not be accessible until you have selected a template. For tutorial purposes, please click on File then New. The Select Template dialogue box will appear. Select any template and click on OK.

Throughout the course of the manual there is a reference to Select or Click, Double-Click and Right-Click.

- Select or Click - When Select or Click is mentioned, position the cursor over a specific area and then left click the mouse.
- Double-Click - When Double-Click is mentioned, position the cursor over a specific area and then left click TWICE.
- Right-Click - When Right-Click is mentioned, position the cursor over a specific area and then right-click the mouse.

Menu Bar

You will see the following items on the menu bar

File

- New – Allows you to create a new project based on a label template, project template or theme
- Open – Allows you to open an existing project
- Close Project – Close the current project
- Save – Save the current project under the existing name
- Save As – save the current project under a different name
- Print – print the label
- Print Preview – preview the label design
- Calibrate Printer – Calibrate the printer so the design matches the paper layout.
- Send by Email – send the project by email – useful for sharing projects, or sending projects to Technical Support
- Exit – Exit MediaFACE 4.0

Edit

- Undo – Allows you to undo the last action
- Redo – Allows you to return the document to its state before the last undo
- Cut – removes and copies the selected object (text, image) to the clipboard
- Copy – copies the selected object to the clipboard
- Paste – paste the object in the clipboard to your design
- Copy Style – Copy the outline, filling, shadow and text styles
- Paste Style – Paste a style onto an existing object
- Select All – Select all objects on the label
- Delete – delete the selected object from the label

View

- Palettes – open a specific palette to assist in designing a label
- Toolbars – view various toolbars on the screen
- Status Bar – turn on/off the status bar
- Workspace – Bring up the window that shows all the labels in your current project. Sometimes called Workspace Navigator or the Label manager.
- Rulers – Allows you to turn on/off the rulers
- Field Codes – Show field codes
- Background – Turn a background image on the label on/off.
- Grid Lines – Turn on/off the grid lines. These are used to align objects
- Zoom – Zoom the entire label for easier viewing
- Last Zoom – Allows you to return to the previous zoom setting
- Snap to Grid – snap an object (text, image) to the nearest grid line
- Snap to Guidelines – snap an object (text, image) to a guidelines
- Grid and Guidelines Setup – create/setup guidelines.

Insert

- Tools
 - Text - **insert a line of text**
 - Rectangle – **insert a rectangle**
 - Ellipse – **insert a circle or ellipse**
 - Line – **insert a line**
- Predefined Text – **Insert Predefined text fields such as date, time, etc...**
- Play List – **Insert a playlist from Windows MediaPlayer or RealPlayer, or a custom playlist created through MediaFACE 4 using our Fingerprinting technology**
- File List – **Insert a file list from the selected folder**
- Data List – **Insert data from a database, excel file, etc...**
- Picture
 - From File – **retrieve an image from your own collection**
 - From Image Library – **retrieve an image from the MediaFACE 4.0 Image Library**
 - From External – **retrieve a picture from a scanner, digital camera or a webcam**
- Barcode – **This allows you to insert a barcode onto your label**
- Object – **Insert**

Format

- Alignment – **align multiple objects together**
 - Group – **Group multiple objects together so they can be easily moved on the label**
 - Ungroup - **Ungroup objects that were previously grouped together**
 - Bring to Front – **Bring the selected layer to the top**
 - Send to Back – **Send the select layer to the bottom of the stack**
 - Move Up
 - Move Down
 - Effects – **Effects that can be applied to images**
 - Original
 - Hue-Saturation
 - Invert
 - Brightness-Contrast
 - Gamma
 - Mosaic
 - Oilify
 - Posterize
 - Solarize
 - Noise
 - Emboss
 - Grayscale
 - Sharpen
 - Underlay
 - Reverse
 - Image – **manipulate an image on your label**
 - Flip Horizontal
 - Flip Vertical
 - Fit To Label
 - Crop Image
 - Convert To – **some objects can be converted to other similar type objects**
 - Square
 - Polygon
-

- Ellipse
- Rectangle
- Circle
- Object Properties

Project

- Insert – **insert a new item into your current project**
 - Item
 - Label
 - Version
 - Blank
 - As Copy
- Move
- Delete
- Share
- Print Version
- Properties
- Save Version as Template
- Project Properties

Tools

- List Manager – **manage your playlists**
- Download – **download new templates, images and software updates**
- Burners – **this is a list of installed cd burning applications that you can launch from here**
- Players – **this is a list of installed media players that you can launch from here**
- Options – **MediaFACE 4 options**
- 3D Preview – **view certain type of labels in 3d**
- Export – **export your label design to a different image format for use in other applications**

Window

- Cascade
- Tile Horizontally
- Tile Vertically
- Arrange Icons
- Windows

Help

- Contents
- Tech Support
- User Information
- Web Registration – **click here to register your software**
- About MediaFACE 4.0

Chapter 5 - Creating a Label

Now it is time to start creating a label. We will design a cd/dvd label with the commonly used features of the software.

Select Template

Select the label template named CD Label (2up). You can see this in the opening screen when starting MediaFACE 4.0 or by selecting File / New.

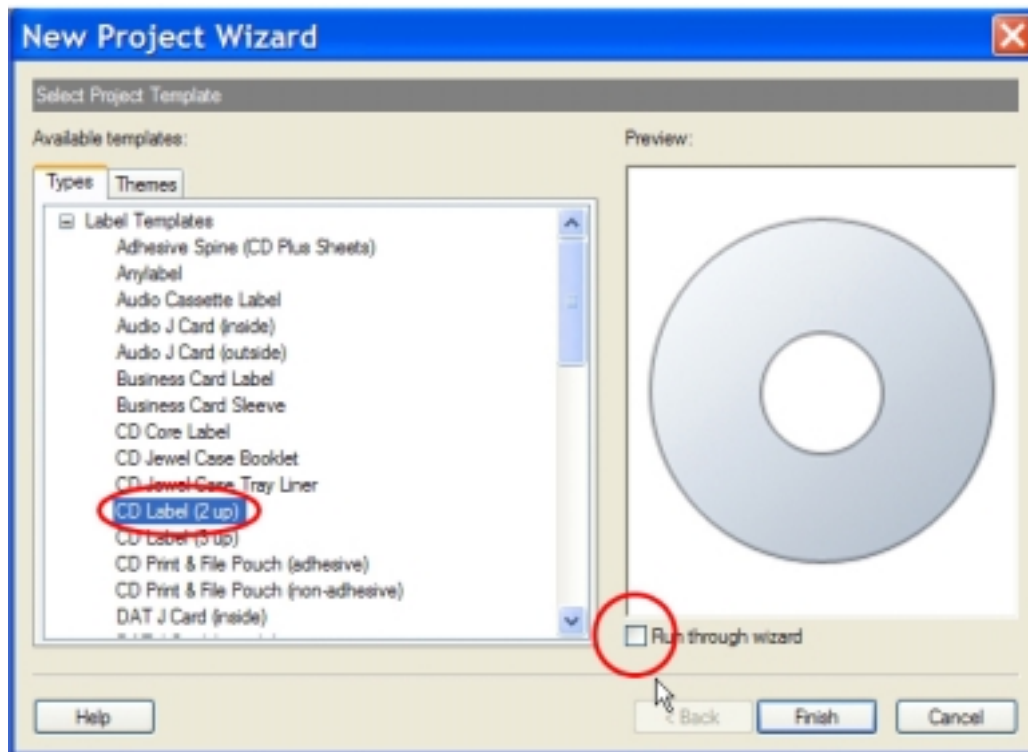


Figure 14 – Select the template circled on the left. Make sure the checkbox is not checked

Select the CD Label (2up) label template, and clear the check mark for “Run through wizard”. The wizard is a series of steps that will walk you through the creation of a label. This will be reviewed later in this document.

Click Finish.

You will now see the main workspace of MediaFACE 4.0.

Insert an Image onto the label

Here we will insert a background image from the MediaFACE 4.0 Image Library.

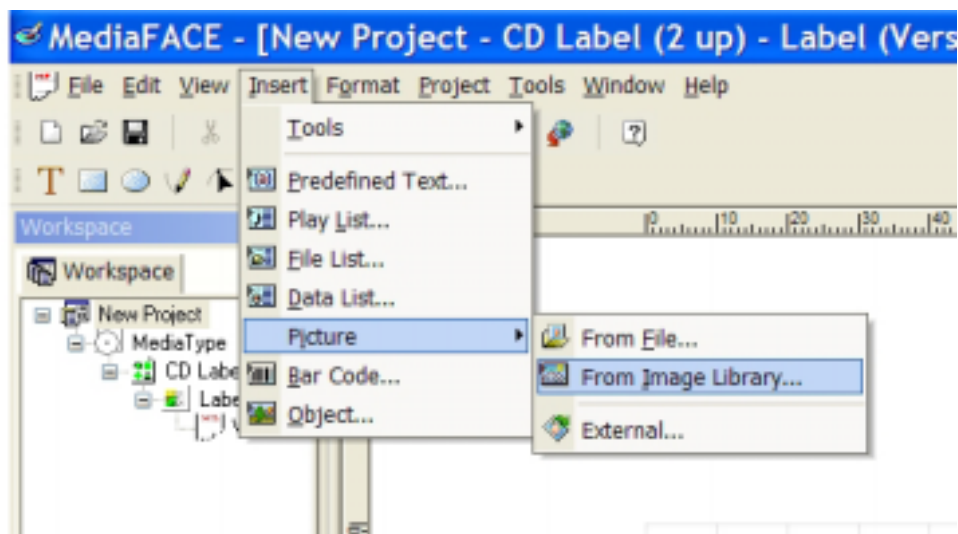


Figure 15 – Inserting an image from the Image Library

To accomplish this, do the following:

- Click on Insert
- Click on Picture
- Click on From Image Library

Another way to insert an image is to use the Object Toolbar.

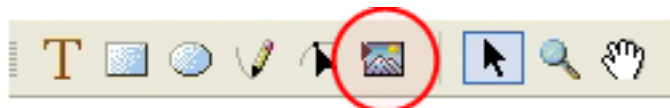


Figure 16 – Object Toolbar – Click on the button that is circled above to insert a picture from the image library

A window will now appear that will show some images, along with several folders named according to the category of the images.

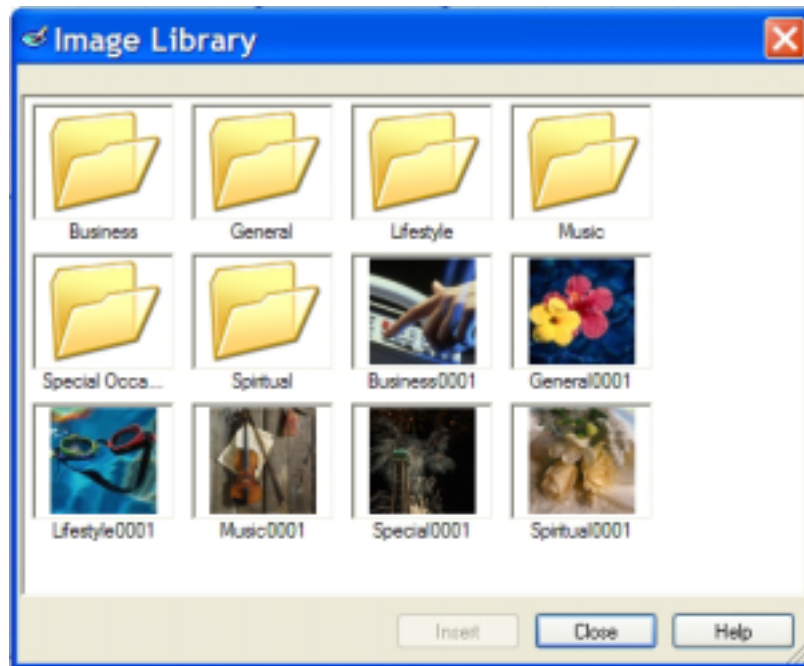


Figure 17 – The MediaFACE 4.0 Image Library contains 500 High Resolution Images

Select one of the 6 images on the top, or double-click on the folders to access additional images. In our example, we will select one in the business category. Double-click the business category and look for the following file:



Figure 18 – Filename: business0043.jpg

Your mouse will change into a crosshair with a small picture icon. Move the cursor over the label, press and hold the left mouse button and move in a downward and diagonal direction. You will notice the picture appearing on the screen. Release the left mouse button. The picture has now been inserted onto the label.

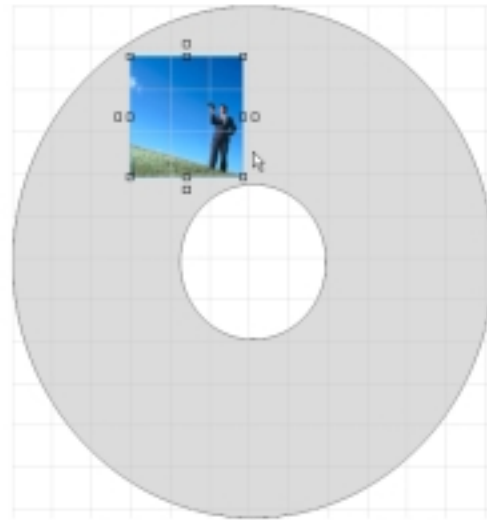


Figure 19 – Image inserted onto a label.

Basic Manipulation

You can perform several types of actions on this image. A quick way of sizing the image can be accomplished by grabbing the handles surrounding the image when you perform a single left-click. Just left-click and hold the mouse button while moving the mouse.

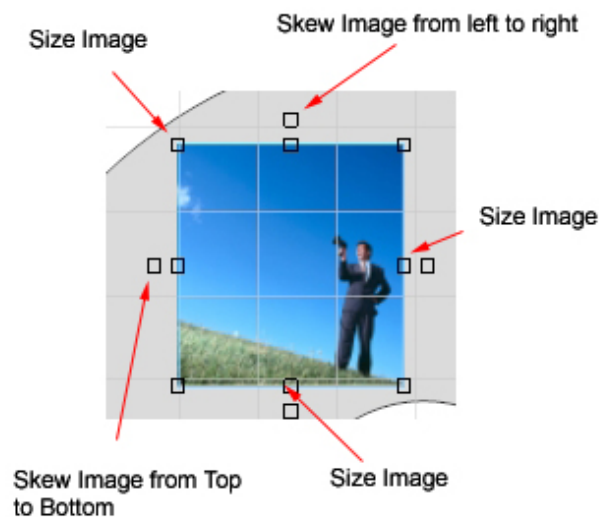


Figure 20 – Manipulating an image. This can also be accomplished via the menu.

Some common operations on images are listed below:

ROTATE IMAGE

First, let's make sure the Format Toolbar is displayed. Click on View -> Toolbars -> Format. Now, left click on the image to make the selection handles appear around the object.



Figure 21 – Image object that is selected

Next, click on the rotate buttons for the image – the buttons to click on are circled below.



Figure 22 – Format Toolbar – clicking either circled button will rotate the image 15 degrees clockwise or counterclockwise.

FLIP HORIZONTAL

This option will flip the image horizontally. Click on Format -> Image -> Flip Horizontal.

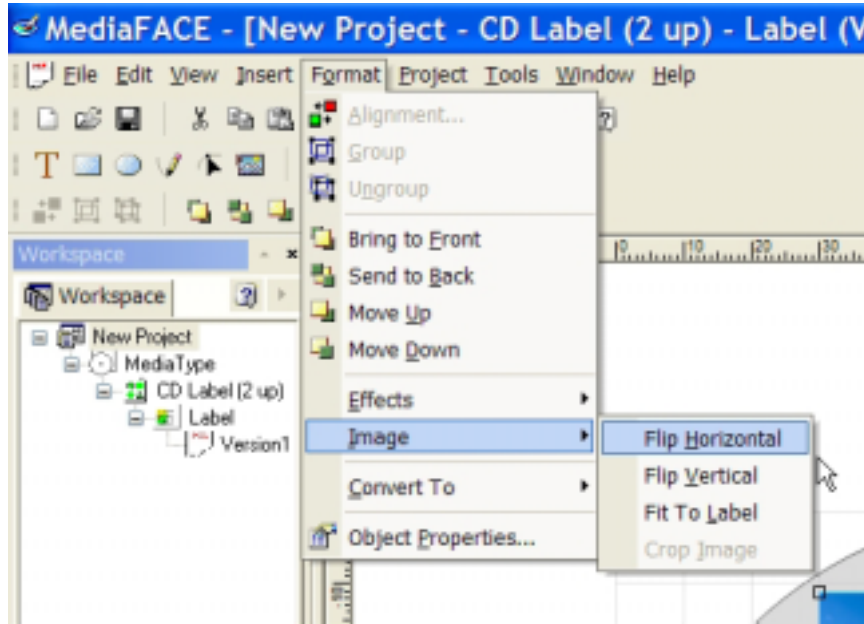


Figure 23 – Make sure to left-click the image to select it, before selecting the menu option.



Figure 24 – Image (Before)



Figure 25 – Image After selecting Flip Horizontal

FLIP VERTICAL

The option will flip the image vertically. Click on Format -> Image -> Flip Vertical.

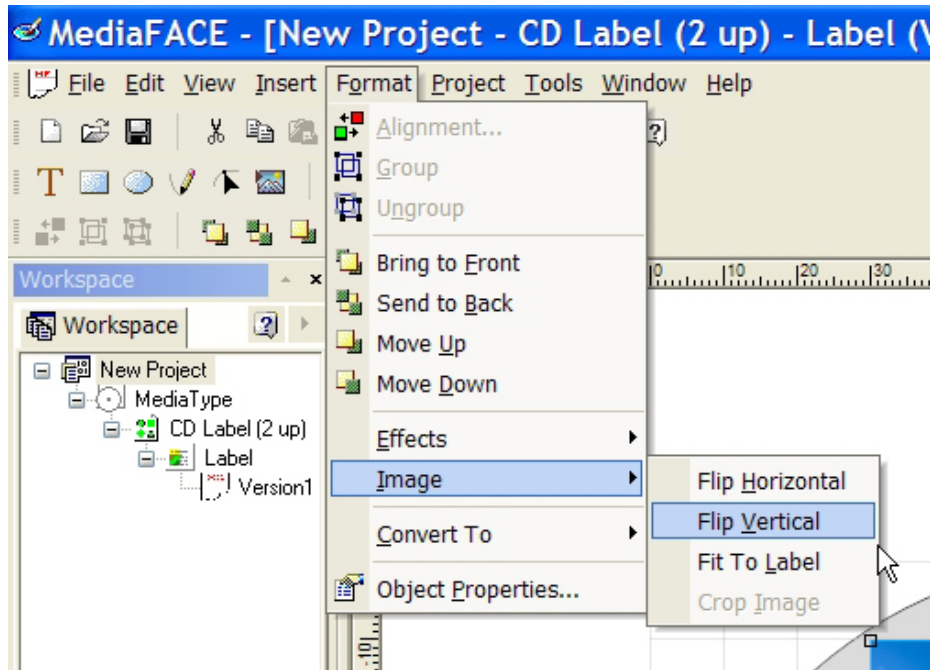


Figure 26 – Select Flip Vertical



Figure 27 – Image (Before)

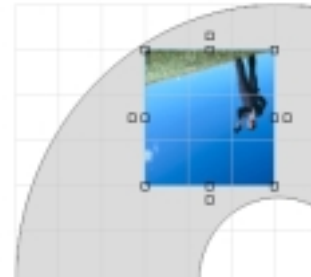


Figure 28 – image after Flip Vertically

FIT TO LABEL

This option will expand the image to cover the entire label. Click on Format -> Image -> Fit to Label.

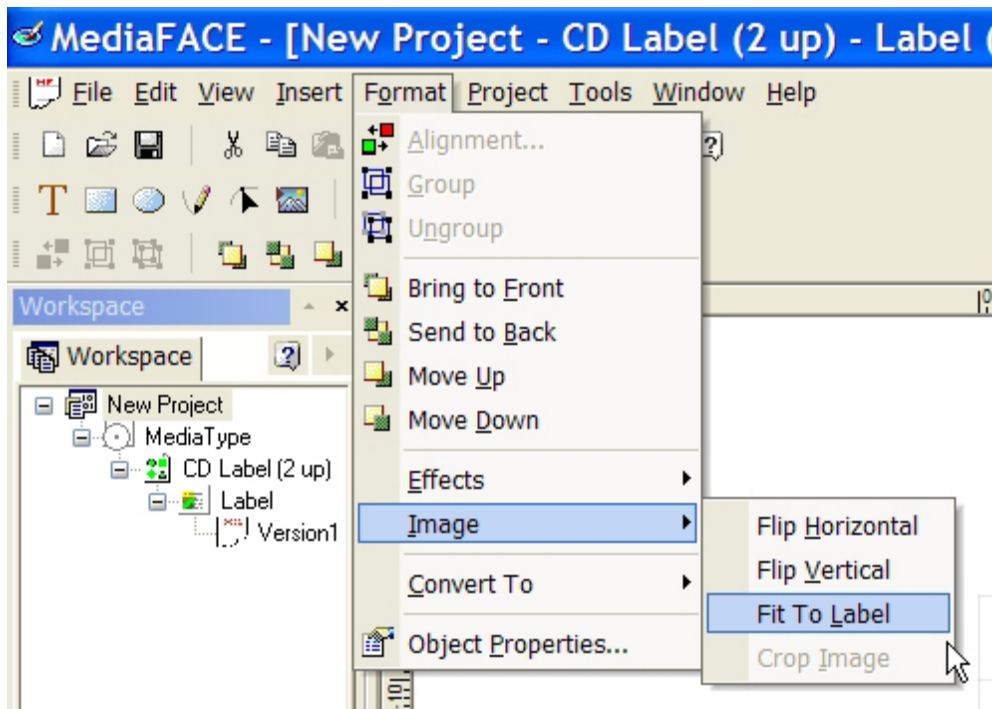


Figure 29 – Selecting the Fit to Label option

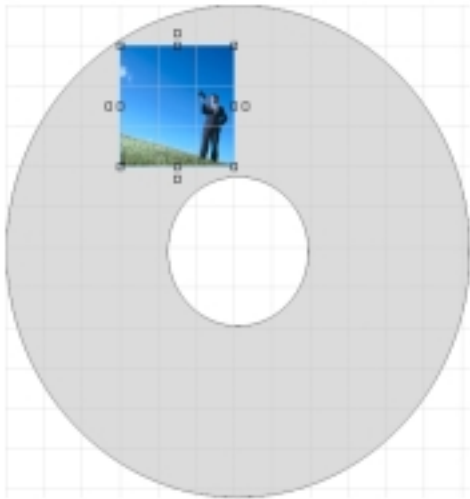


Figure 30 – Image when it is placed on the label



Figure 31 – Image covers the entire label area

Insert Text onto a label

Here we will insert text onto a label and apply stunning visual effects. To insert text, select the Text button on the object toolbar.

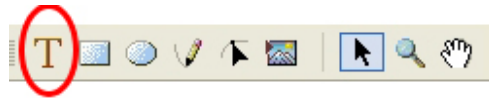


Figure 32 – Select the T for the text tool.

If the above toolbar does not appear on your screen, go to View -> Toolbars -> Object Tools. After selecting this option, the Toolbar should appear on the top of your screen. Select the button that is circled in figure 32 above. The mouse icon will convert to a cross-hair with a small letter “T” appear next it.

You will need to draw the box for the text. Move your mouse cursor over the label, left click and hold the mouse button. Move the mouse button down and to the left. You will notice a box being drawn. Once you have the desired size, release the left mouse button. When this happens, the text palette will appear.

Another method to insert text is to click on Insert -> Tools -> Text.

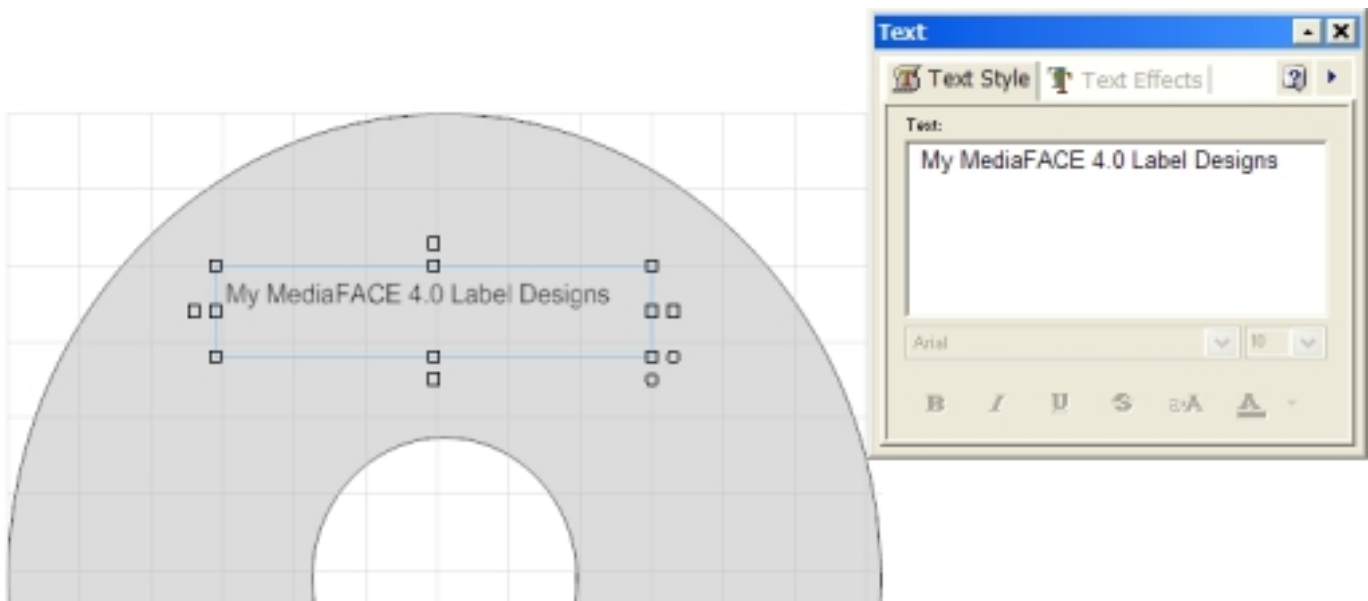


Figure 33 – Text placed on label, with the Text Palette

The Text Palette, a small window with 2 tabs titled Text Style and Text Effects, is where text is entered, the font, size color can all be selected.

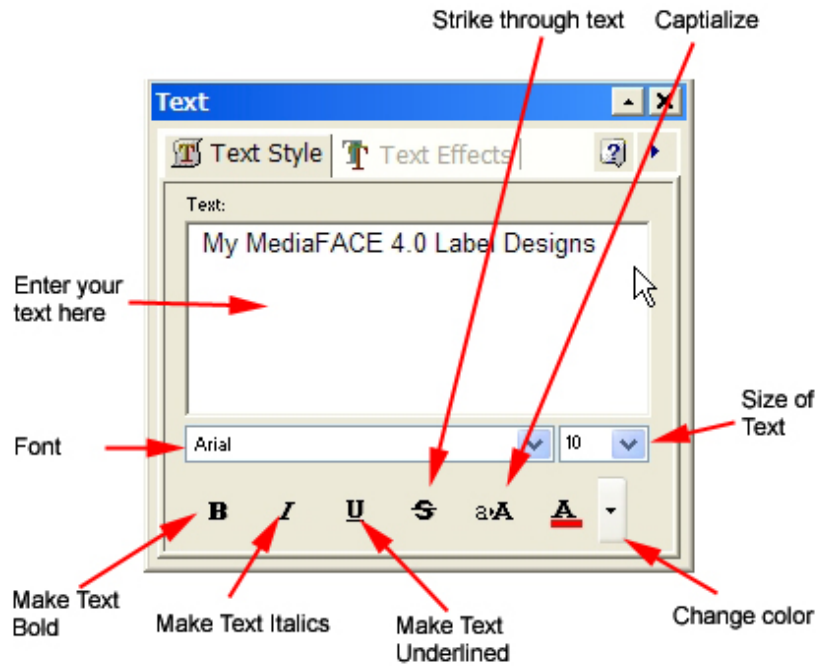


Figure 34 – Text Style Palette – make modifications to your text like in Microsoft Word

The Text Effects Palette allows you to enhance your text in different ways:



Figure 35 – Text Effects Palette

For example, if we select balloon text, our text would look like the following:

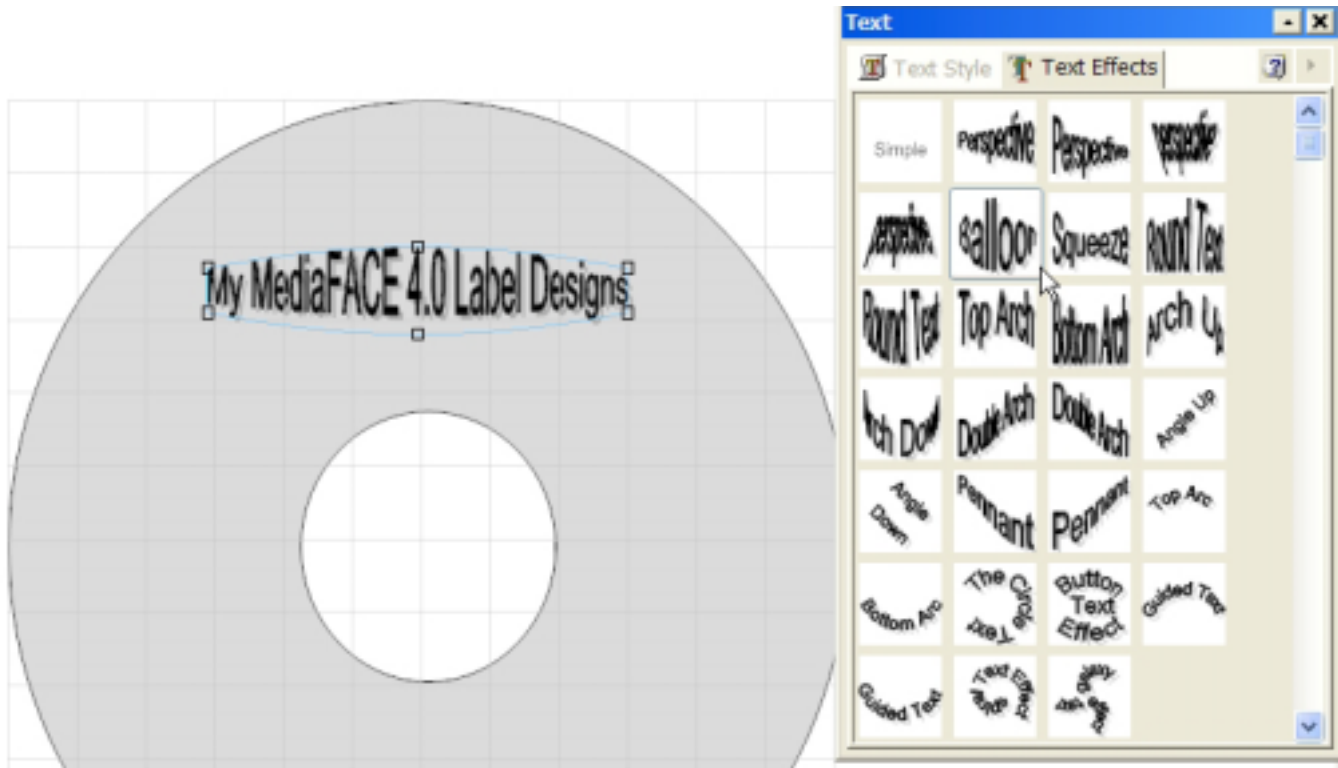


Figure 36 – Text Effects applied. See how selecting the Balloon effect changes the text?

If you look at the Balloon text on the label, you will notice the handles or little squares. You can left click and drag any one of these handles to stretch the text even more.

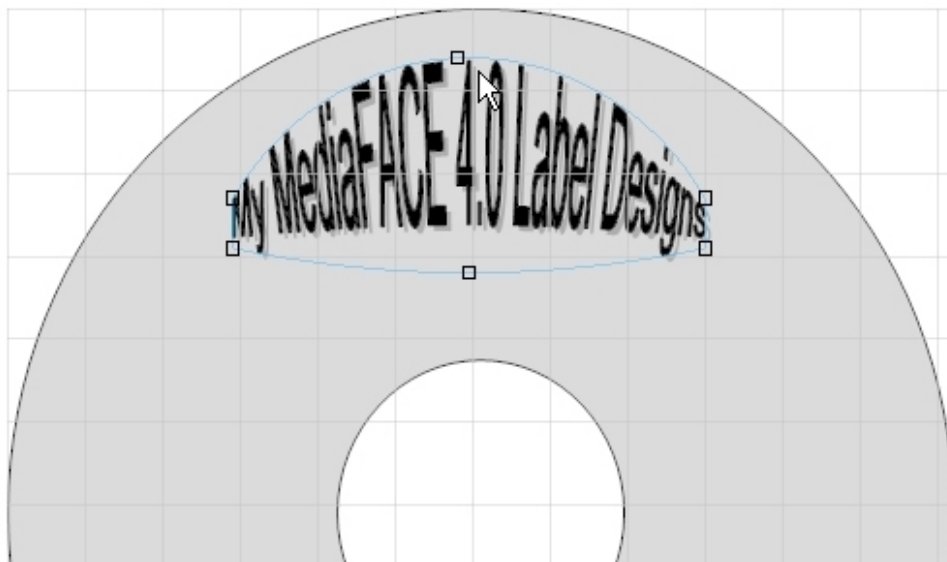


Figure 37 – If we grab the middle top 'handle' and move it upward, it stretches the text accordingly

Printer Calibration

Printer Calibration is the process of making sure the MediaFACE 4.0 software understands where the printer prints on the paper. All printers, even the same model, will have slight variations when printing. It is quite possible that 2 printers of the same model will print the same document but they will vary by 2mm when comparing the paper to each other. Calibration allows us to make sure the software accommodates the variance when printing on our paper, assuring the design matches the layout accurately.

Calibration Wizard

You can access the calibration wizard from several locations. From the start menu, click on Start -> Program Files (or All Programs) -> MediaFACE 4.0 -> MediaFACE 4.0 Calibration Wizard.

You can also access the calibration wizard from within the print window by clicking on the button named "Calibrate"

There are 2 methods of calibrating your printer.

Plain Paper Calibration Method Overview

The Plain Paper method for calibration can be used with a blank sheet of paper. Please do not use a label sheet, since it will waste your label sheet. The software will print a sheet with instructions on the top with a ruler grid in the center of the page.

The first window of the calibration wizard that appears will be the following:

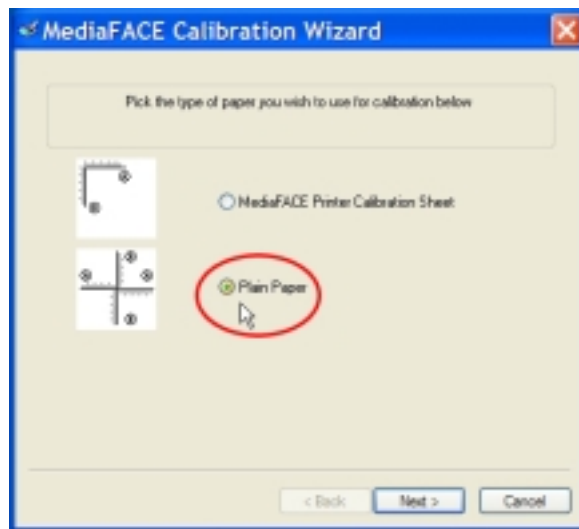


Figure 38 – Select the Plain Paper Method

After selecting Plain paper, click Next

You will now see the following window:

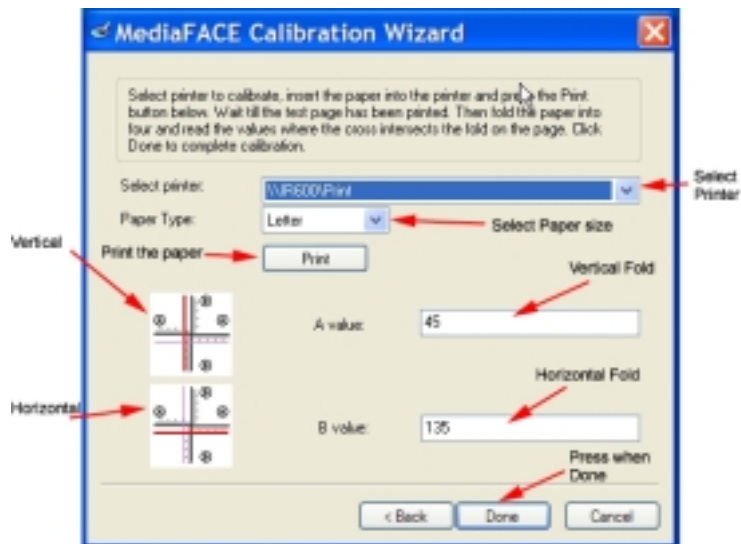


Figure 39 – Printer Calibration Window for entering values

Click Print on this window. You will notice the paper that has been printed will have some directions on the top, as well as a ruler grid in the center of the paper. Please do the following.

1. Fold the paper so that the two “A”’s meet, being sure to keep the edges of the paper as even as possible
2. Crease the paper thoroughly, then unfold
3. Repeat the process, but this time fold the paper to the “B”’s meet. Be sure to keep the edges of the paper as even as possible.
4. Crease the paper thoroughly, then unfold.
5. Locate where the vertical (up and down) crease crosses the **A** line, and enter the number into the calibration window for the A value (see figure above).
6. Locate where the horizontal (left and right) crease crosses the **B** line, and enter the number into the calibration window for the B value (see figure above)
7. Click Done

MediaFACE 4.0 Printer Calibration Sheet Overview

You may have received a Printer Calibration Sheet with your purchase. The printer calibration sheet is similar to the plain paper method of calibrating, without the need of folding the paper.

The Printer Calibration Sheet will have a ruler grid in the upper left corner of the page, with instructions on the lower half of the paper.

The first window of the calibration wizard that appears will be the following:

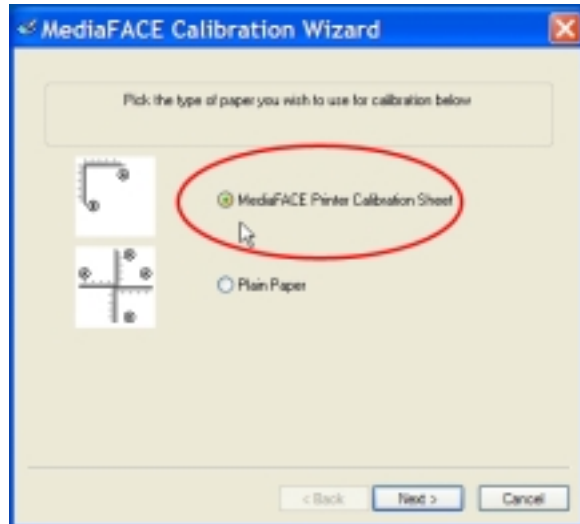


Figure 40 – Select the MediaFACE Printer Calibration Sheet

After selecting MediaFACE Printer Calibration Sheet, click Next

You will now see the following window:

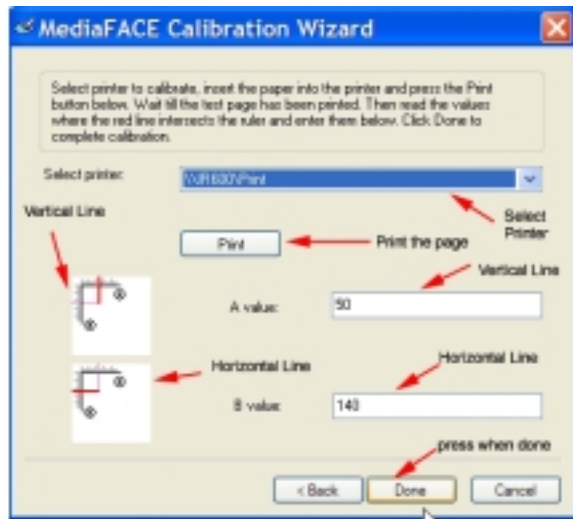


Figure 41 – Printer Calibration Window for entering values

Place the Printer Calibration Sheet into your printer and press Print.. The printer calibration sheet has directions on how to enter the values into this window. Please do the following.

1. Locate where the Vertical Line (up and down) crosses the “A” line, and then enter this number into the A Value box in this window.
2. Locate where the Horizontal Line (left to right) crosses the “B” line, and then enter this number into the B Value box in this window.
3. You are now done calibrating. Click Done.

Printing My Label

We are now ready to print our label. Go to File -> Print and you should see a screen similar to the following:

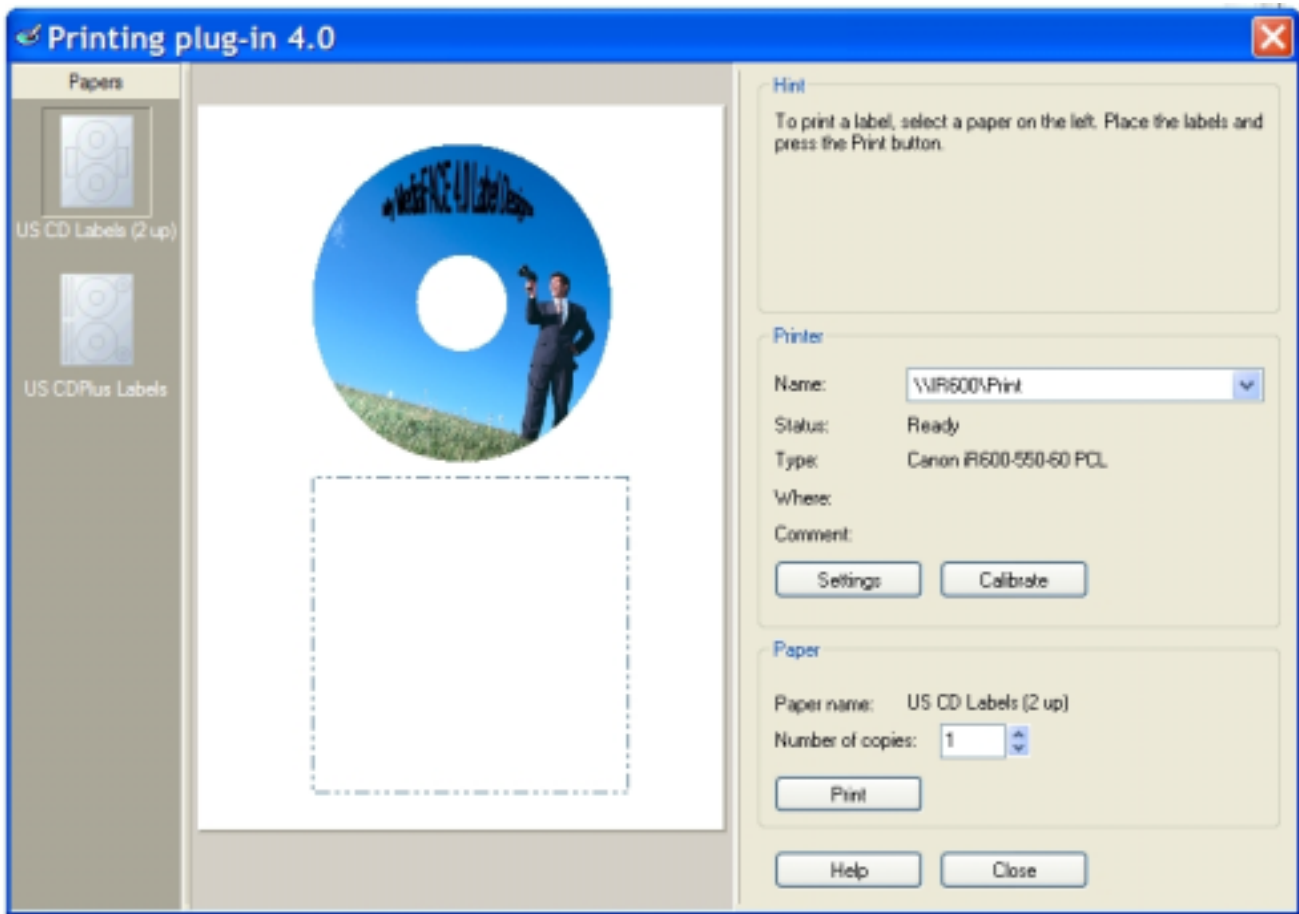


Figure 42 – Printing window

Select the paper you have on the left side by left-clicking it . Now you can decide which labels you wish to print. Left single click on the label(s) you wish to print. In this case only the top label will be printed. Just click the print button and you are done. When you are done printing, just press close.

Saving My Design

To save your design, click on File -> Save. Enter a filename and click ok. Your project is now saved.

Chapter 6 - Fingerprinting : Identifying song names for your design

Overview

MediaFACE 4.0 can identify song names from Audio CDs or MP3 files. Instead of typing in the song titles and artist names, you can use MediaFACE 4 to automatically identify your song collection and insert this information onto the label or paper. You must have an internet connection for this to work properly.

In our example, we will use a directory of MP3 files as our song list. We will use the fingerprinting technology of MediaFACE 4.0 to automatically recognize the song titles and artists. We will then place this information onto a cd tray liner.

Identifying song information and inserting this information onto a label is a 2 step process. The first step involves creating a playlist (or list of song titles, artists, etc...). Fingerprinting is done during this step. You will actually save the playlist within the List Manager.

Once the list is created, you will then insert the list onto the label.

Selecting Label

Select the CD Jewel Case Tray Liner from File -> New. Please make sure to remove the mark on the check box “Run through Wizard”.

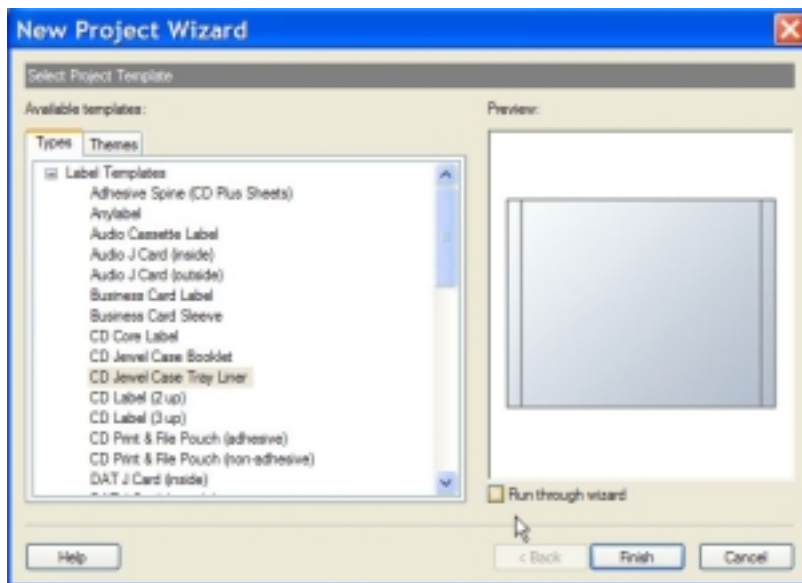


Figure 43 – Select the CD Jewel Case Tray Liner

Click “Finish” to complete this step.

Start the list Manager
Click on Tools -> List Manager. This will open the main list manager screen.

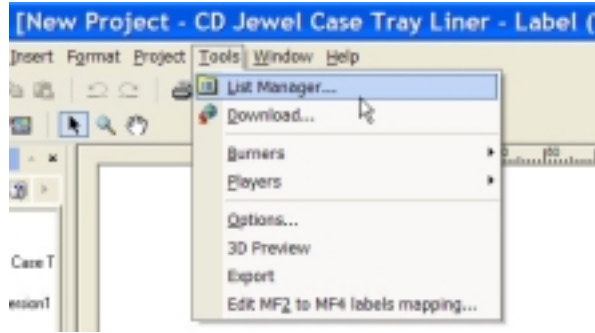


Figure 44 – Start the list manager

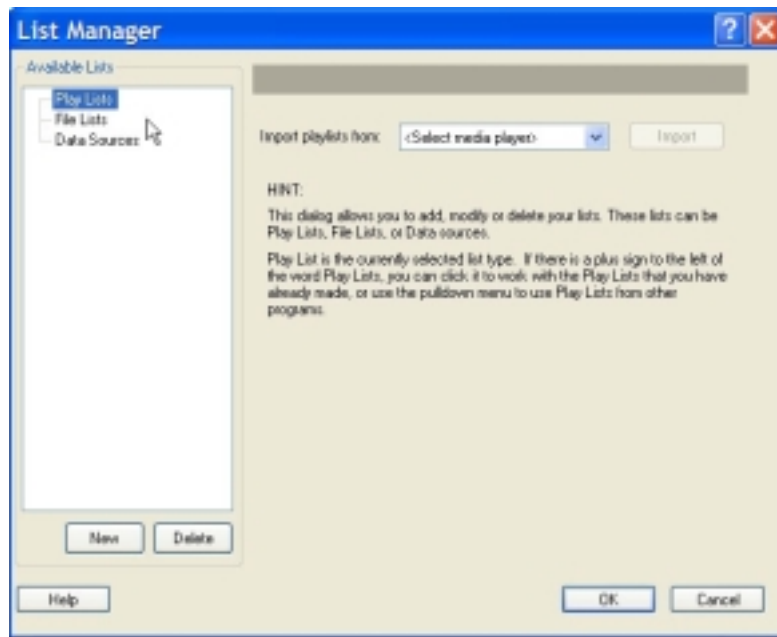


Figure 45 – The List Manager

Create a Playlist

Left click on PlayLists. Now click the **New** button. This will create a new playlist.

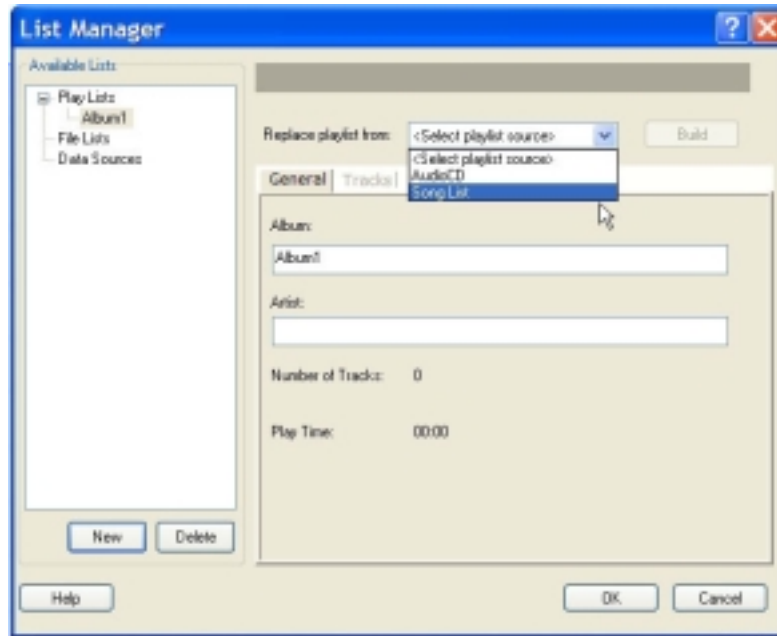


Figure 46 – Create a new playlist, then select Song List from the pulldown menu

Click on the pulldown list at the top of the screen “Replace playlist from”. Select Song List from the pulldown menu.

Click the Build button next to the pulldown menu. The Song List window will pop-up.

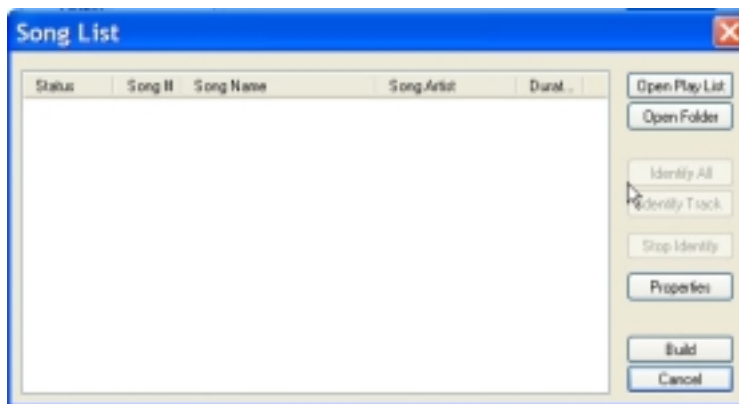


Figure 47 – Song list window

On this window, we will select the directory where our mp3 files reside. Click on the **Open Folder** button.

A directory selection window will pop-up similar to the following:



Figure 48 – Select the directory where the MP3 files are stored

Select the directory where the MP3 files are stored and click OK. The song list window will now populate with some or all song names. This is done because of the nature of MP3 files. MP3 files may contain information about the name of the song. In this example, you will notice that some song titles and artists are displayed. The other MP3 files may list “Unknown song” or “Unknown Artist” since the MP3 files do not contain this information.

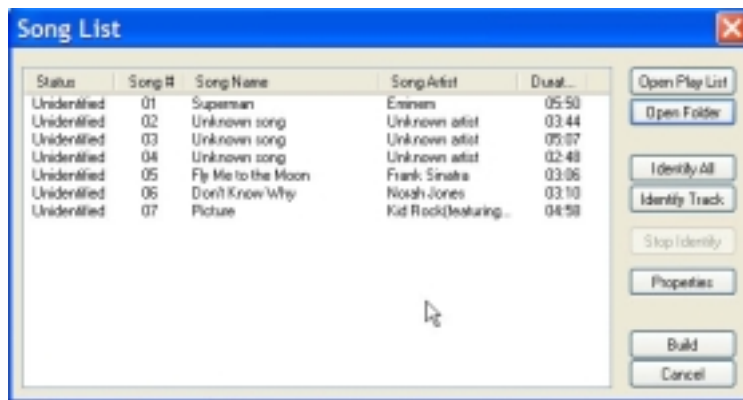


Figure 49 - Song list initially populated after selected the directory where MP3 files are stored

Click on “Identify All” button. This will start the fingerprinting process. This process requires an internet connection. You will notice the status column will display information such as “searching”, “identified”, “pending”, etc...



Figure 50 – Fingerprinting in progress – notice the status field

In our example, you will notice the songs that were initially identified as “Unknown Song” and “Unknown Artist” have been replaced with the correct title and artist information.

Once the fingerprinting process is completed, click “Build”.

Naming your Playlist

After building your playlist using the Fingerprinting technology of MediaFACE 4.0, name your playlist under “album” name.

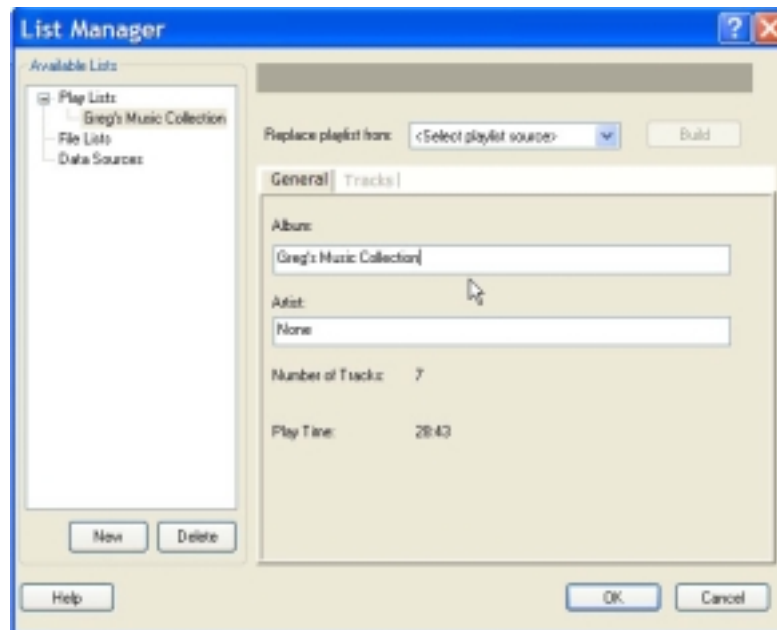


Figure 51 – Change the name of the playlist

We are now ready to insert the playlist onto our CD Jewel Case Tray Liner.

Inserting a Playlist

To insert the newly created playlist, Select Insert -> Playlist

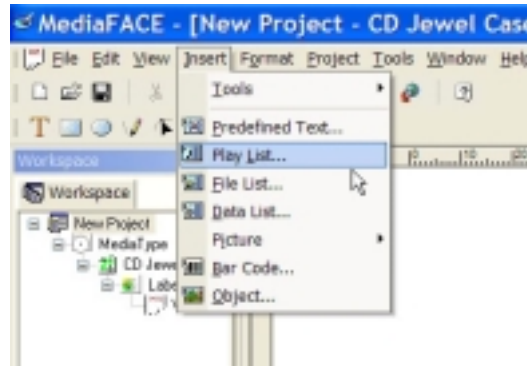


Figure 52 – Insert a playlist from the menu

Select the playlist name you created in the previous step.

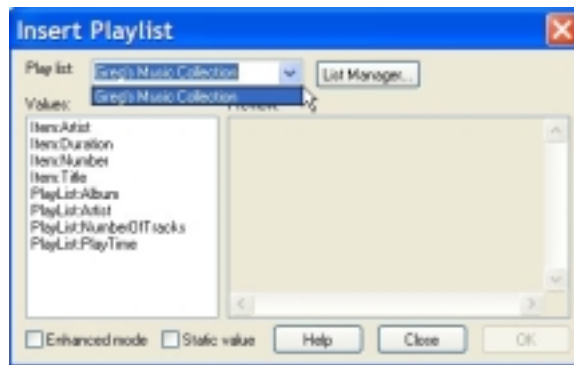


Figure 53 – Select the playlist to insert

Once the playlist is selected, you will insert each column of information for your label design. For example, we will insert the Artist for each of these songs onto the label. Make sure to select “static value” on this screen.

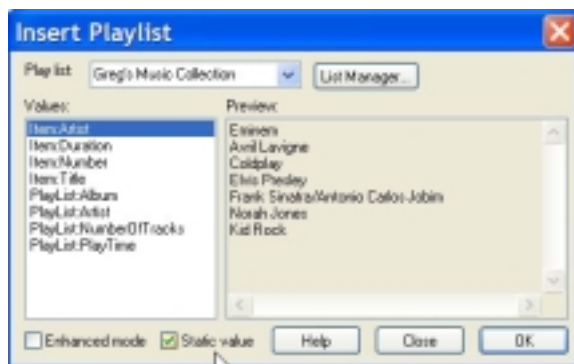


Figure 54 – Select Item:Artist. Also make sure to check “Static Value”

Click OK. This will insert the text onto the label.

You may have to adjust the size of the text box so the artist names do now wrap.

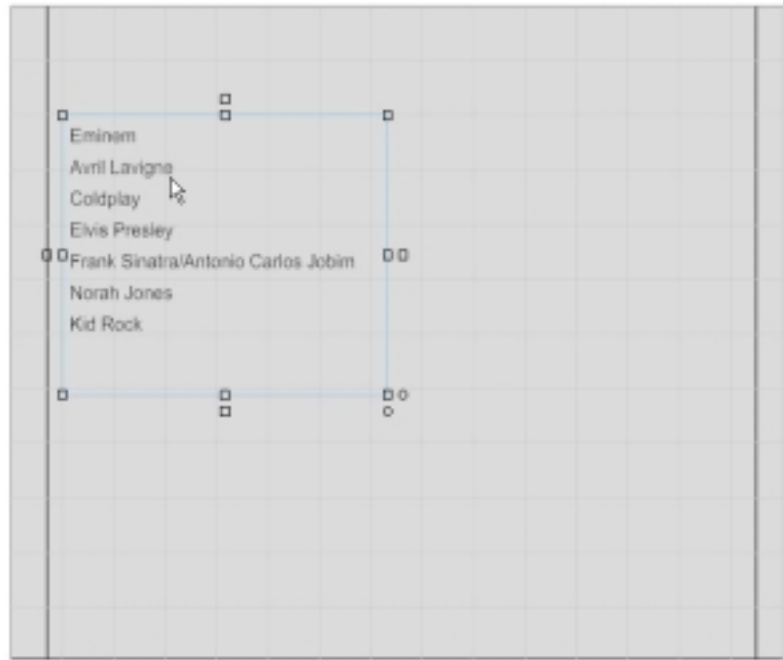


Figure 55 – Artist names are inserted onto the trayliner – adjust the text box if needed to avoid text wrapping

We now want to insert additional information for the playlist, list song titles. Click on Insert -> Playlist. Select the playlist name. Now select

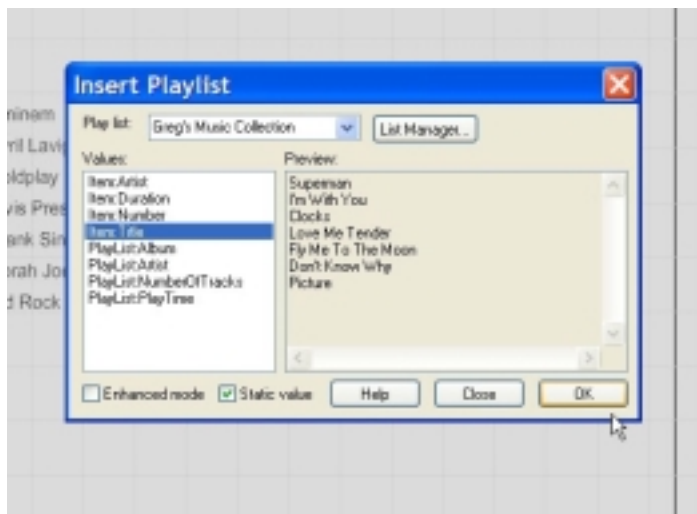


Figure 56 – Select Item: Title. Make sure to select “static value”. Click Ok to insert

The song titles will be placed on the label. You may have to adjust the text box to avoid text wrapping. Now position the text box next to the Artist names so each line matches up. You are now ready to print.

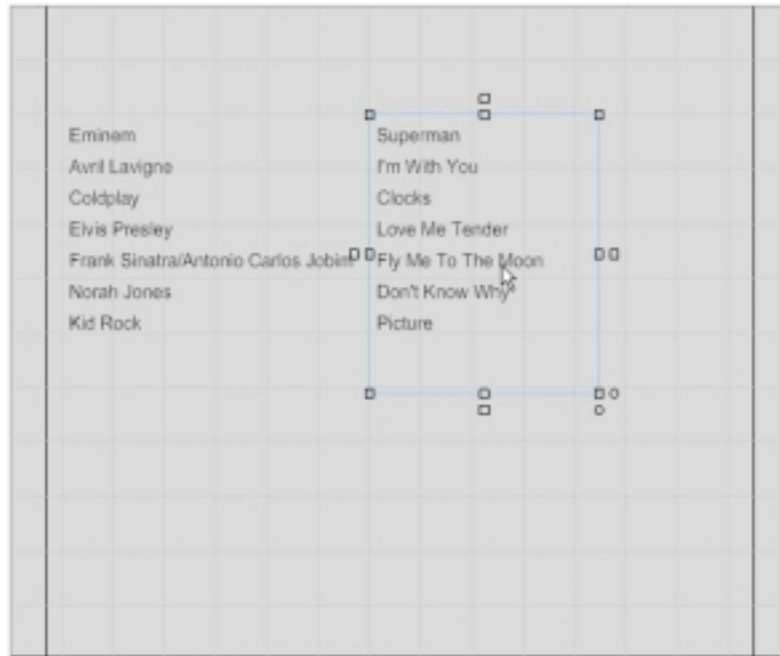


Figure 57 – Song Titles placed onto label

Technical Support

You can call Technical Support at 1-866 775-7860 or email us at feltech@neato.com

Software Registration

Register your copy of MediaFACE 4.0 online at <http://www.neato.com/fnregister>

Label and Insert Refills

NEATO Label and Insert refills are available at <http://www.neato.com> and major retailers everywhere